

MCN150

**METAL CONNECTOR NAILER
CLAVADORA DE CONECTORES DE METAL
CLOUEUSE À CONNECTEURS MÉTALLIQUES**

BOSTITCH®

MCN150

**METAL CONNECTOR NAILER
CLAVADORA DE CONECTORES DE METAL
CLOUEUSE À CONNECTEURS MÉTALLIQUES**



**TOOL PARTS ILLUSTRATION
ILUSTRACIÓN DE LAS PIEZAS DE LA HERRAMIENTA
ILLUSTRATION DES PIÈCES D'OUTILLAGE**

⚠ WARNING:

⚠ ADVERTENCIA:

⚠ ATTENTION:

BEFORE PERFORMING REPAIRS ON THIS TOOL, ALL OPERATORS SHOULD STUDY THIS ILLUSTRATION, AS WELL AS THE PARTS LIST AND OPERATION AND MAINTENANCE MANUAL. OPERATORS SHOULD UNDERSTAND AND FOLLOW ALL SAFETY WARNINGS AND INSTRUCTIONS. KEEP THIS ILLUSTRATION WITH THE TOOL FOR FUTURE REFERENCE. IF YOU HAVE ANY QUESTIONS, CONTACT YOUR BOSTITCH REPRESENTATIVE DISTRIBUTOR.

ANTES DE LLEVAR A CABO CUALQUIER REPARACIÓN EN LA HERRAMIENTA, TODOS LOS OPERARIOS DEBERÁN ESTUDIAR ESTA ILUSTRACIÓN, ASÍ COMO LA LISTA DE PIEZAS Y EL MANUAL DE OPERACIÓN Y MANTENIMIENTO. LOS OPERARIOS DEBERÁN ENTENDER Y SEGUIR TODAS LAS ADVERTENCIAS E INSTRUCCIONES DE SEGURIDAD. CONSERVE ESTA ILUSTRACIÓN CON LA HERRAMIENTA PARA PODER CONSULTARLA EN LO FUTURO. SI TUVIERA ALGUNA PREGUNTA, PONGASE EN CONTACTO CON SU REPRESENTANTE O DISTRIBUIDOR DE BOSTITCH.

AVANT DE PROCÉDER À LA RÉPARATION DE CET OUTIL, LES OPÉRATEURS DOIVENT ÉTUDIER LA PRÉSENTE ILLUSTRATION AINSI QUE LA LISTE DE PIÈCES ET LE MANUEL D'INSTRUCTIONS ET D'ENTRETIEN ; ILS DOIVENT ÉGALEMENT COMPRENDRE ET OBSERVER LES CONSIGNES DE SÉCURITÉ ET LES INSTRUCTIONS. CONSERVER CETTE ILLUSTRATION AVEC L'OUTIL POUR RÉFÉRENCE FUTURE. SI VOUS AVEZ DES QUESTIONS, COMMUNIQUEZ AVEC VOTRE REPRÉSENTANT OU VOTRE DISTRIBUTEUR DE BOSTITCH.

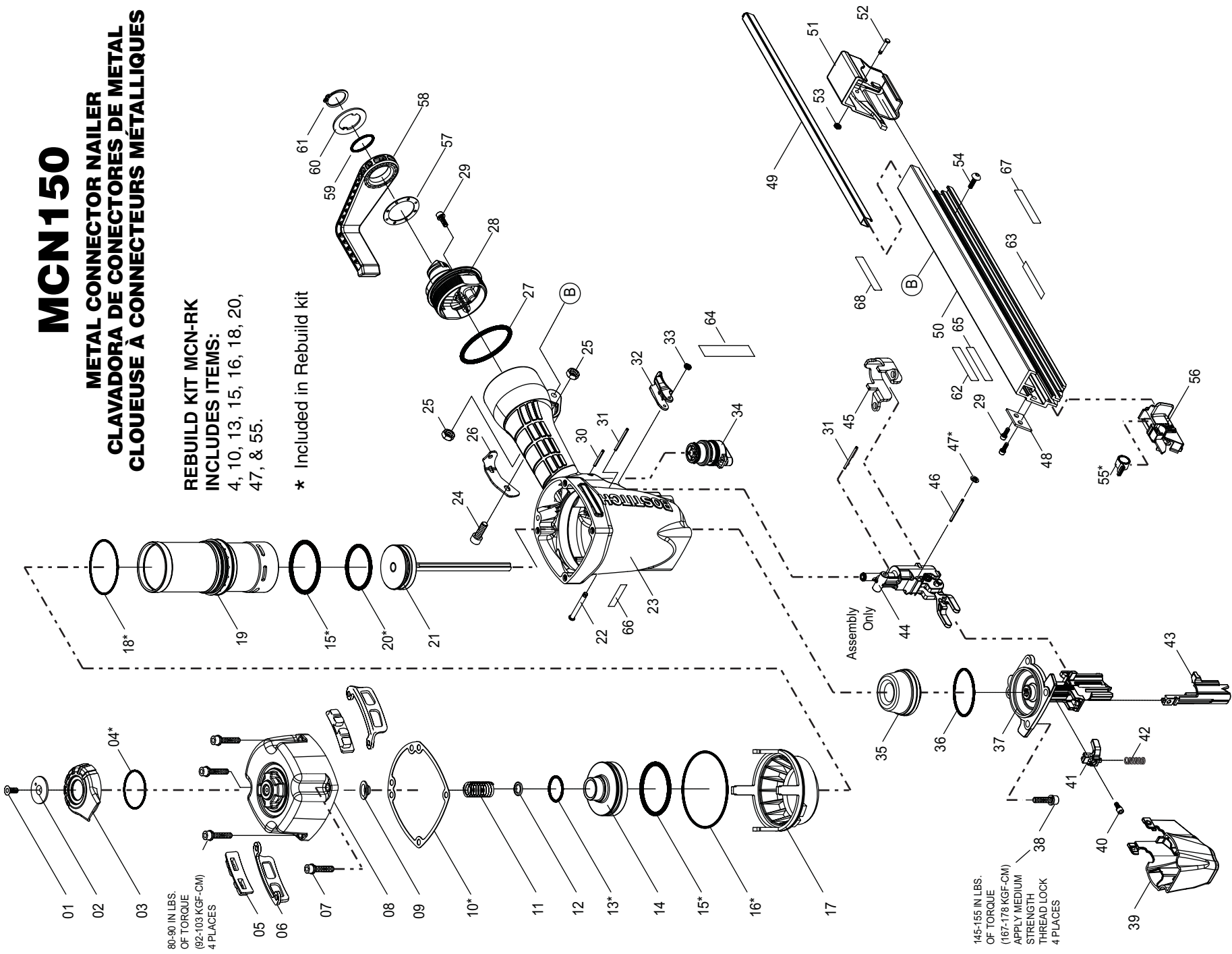
BOSTITCH®
Stanley Fastening Systems L.P.

IP1230-1REVD 05/07

MCN150

METAL CONNECTOR NAILER CLAVADORA DE CONECTORES DE METAL CLOUEUSE À CONECTEURS MÉTALLIQUES

80-90 IN.LBS.
OF TORQUE
(92-103 KGF-CM)
4 PLACES



REBUILD KIT MCN-RK
INCLUDES ITEMS:
4, 10, 13, 15, 16, 18, 20,
47, & 55.

* Included in Rebuild kit

145-155 IN.LBS.
OF TORQUE
(167-178 KGF-CM)
APPLY MEDIUM
STRENGTH
THREAD LOCK
4 PLACES

Item#	Illus. #	Description
174041	<u>1</u>	SCREW,SFHCS,M4X0.7X10
174042	<u>2</u>	SPACER,EXHAUST COVER
174043	<u>3</u>	COVER,EXHAUST
174044	<u>4</u>	O-RING,41.0MMX1.78MM
174045	<u>5</u>	PAD,RUBBER
174046	<u>6</u>	BRACKET,RUBBER PAD
174047	<u>7</u>	SCREW,SHCS,M5X0.8X25
174048	<u>8</u>	ASSEMBLY,DEFLECTOR
174049	<u>9</u>	SEAL,DEFLECTOR
174050	<u>10</u>	GASKET,FRAME/DEFLECTOR
174051	<u>11</u>	SPRING,COMPRESSION
174052	<u>12</u>	WASHER,SPECIAL
174053	<u>13</u>	O-RING,20.8MMX2.4MM
174054	<u>14</u>	PISTON,HEAD VALVE
174055	<u>15</u>	O-RING,44.7MMX3.5MM
174056	<u>16</u>	O-RING,66.5MMX2.0MM
174057	<u>17</u>	COLLAR,CYLINDER SLEEVE
174058	<u>18</u>	O-RING,45.5MMX2.0MM
174059	<u>19</u>	SLEEVE,CYLINDER
174060	<u>20</u>	O-RING,36.0MMX4.0MM
174061	<u>21</u>	ASSEMBLY,DRIVER/PISTON
174062	<u>22</u>	STEPPED PIN
174063	<u>23</u>	ASSEMBLY,FRAME
174064	<u>24</u>	SCREW,SHCS,M5X0.8X18
174065	<u>25</u>	NUT,NYLON LOCK,M5X0.8
174066	<u>26</u>	BRACKET,END CAP
850242	<u>27</u>	O-RING,1.799X.103
175561	<u>28</u>	CAP,END
174069	<u>29</u>	SCREW,SHCS,M4X0.7X10
174070	<u>30</u>	PIN,SPRING,M3X22MM
100298	<u>31</u>	PIN,SPIRAL M3X30
174072	<u>32</u>	ASSEMBLY,TRIGGER
174073	<u>33</u>	O-RING,2.05MMX2.62MM
TVA14	<u>34</u>	KIT,TRIGGER VALVE
174075	<u>35</u>	BUMPER,PISTON STOP
851483	<u>36</u>	O-RING,1.739X.070
174077	<u>37</u>	ASSEMBLY,NOSE
174078	<u>38</u>	SCREW,SHCS,M6X1.0X25
174079	<u>39</u>	COVER,NOSE
174080	<u>40</u>	SCREW,SHCS,M4X0.7X8
174081	<u>41</u>	FOLLOWER,MOVABLE NOSE
174082	<u>42</u>	SPRING,COMPRESSION
174083	<u>43</u>	NOSE,MOVABLE
174084	<u>44</u>	ASSEMBLY,CT HOUSING
174085	<u>45</u>	BRACKET,CT HOUSING
174086	<u>46</u>	PIN,SPRING,M3X45MM
174087	<u>47</u>	FIXED PLUG
174088	<u>48</u>	SPACER,MAGAZINE
174089	<u>49</u>	LINER,NAIL GUIDE
174090	<u>50</u>	MAGAZINE
174091	<u>51</u>	COVER,MAGAZINE

174092	<u>52</u>	PIN,SPECIAL
174093	<u>53</u>	WASHER,SPECIAL
174094	<u>54</u>	SCREW,SBHCS,M5X0.8X16
174095	<u>55</u>	ASSEMBLY,PUSHER SPRING
174096	<u>56</u>	ASSEMBLY,PUSHER
175582	<u>57</u>	SEAT PLATE,HOOK
175583	<u>58</u>	HOOK
175557	<u>59</u>	O-RING,21.9MMX2.62MM
175585	<u>60</u>	CAP,HOOK
175586	<u>61</u>	RING,RETAINING
159922	<u>62</u>	LABEL,WARNING,SB TOOLS
171498	<u>63</u>	LABEL,WARNING,MCN150
175638	<u>64</u>	LABEL,STRAP SHOT
171499	<u>65</u>	LABEL,PRODUCT,MCN150
175429	<u>67</u>	LABEL,USE ONLY BOSTITCH
177780	<u>68</u>	LABEL,WARNING